

# ESTATE LAND AUCTION

**+/- 400 Acres of Pipestone County Minnesota  
Land Located Near Woodstock, MN  
Including FARM #1 - +/- 320 Acres of  
Productive High Percentage Tillable Land with  
an Existing Acreage Site/Farmstead Situated in  
Burke Twp. in Pipestone County  
and FARM #2 - +/- 80 Acres with a Combination  
of Cropland and Prospects for Excavation of  
Gravel & Other Aggregates Situated in  
Rock Twp. in Pipestone County, MN**

We will offer the following Land at public auction "On Site" – with FARMS #1 & #2 to both be offered simultaneously at the Sale Site at the location Farm #1 located at 1615 111th Street, Woodstock, MN; located from Woodstock, MN – 1 mile west to the NE corner of the land at the Jct. of 170<sup>th</sup> Ave. and 111th St.; or from Pipestone, MN (McDonald's Corner) - 8 miles east on Hwy. #30 and ¼ mile north on 160<sup>th</sup> Ave. to the SW corner of the land.

**FARM #1 – +/- 320 Acres in Burke Twp., Pipestone Co., MN Land -  
To be Offered as 4 Individual Tracts, Combinations of Tracts or as a 320 Acre Unit  
FARM #2 – +/-80 Acres of Rock Twp., Pipestone Co., MN Land w/Crop  
& Gravel Excavation Opportunities – To Be Offered as an Individual Parcel  
To inspect the residence, contact Jim Feyerheisen – 507-227-2468  
or the Auctioneers.**

**AUCTIONEER'S NOTE:** The heirs of Delbert and Delores Feyerheisen have made the decision to offer this Pipestone County, MN land at public auction. This auction presents the opportunity to purchase parcels of land that have been in the Feyerheisen Family for many decades, with Farm #1 being inclusive of some Choice Productive High Percentage Tillable Cropland, with added income from an existing wind tower and wind rights on this farm; Farm #2 has a mixture of crop production and potential income from mining of gravel and other aggregates, while also having some prospects for hunting and recreational habitat. These are two diversely different properties that have amenities to suit the needs of a variety of buyers, thus if you are in the market for Pipestone County, MN land with a variety of desirable amenities to add to a row crop farming operation, land with gravel prospects or as an investment, then make plans to inspect these properties and be in attendance at this auction!

- *THURSDAY*
- *SEPT. 9, 2021*
- *SALE TIME:*  
*10:00 AM*
- *Auction*
- *Location—*  
*1615 111th St.,*  
*Woodstock, MN*

**FARM #1 – 320 Acres in Burke Twp., Pipestone County, MN – LEGAL DESC.:** The NW $\frac{1}{4}$ , the N $\frac{1}{2}$  SW $\frac{1}{4}$  and the N $\frac{1}{2}$  NE $\frac{1}{4}$ , all in Sec. 9, T. 106N., R. 44W., (Burke Twp.), Pipestone County, MN

**Farm #1 will be offered as Tr. #1- N $\frac{1}{2}$  NW $\frac{1}{4}$  - +/-80 Acres Improved; Tr. #2 – S  $\frac{1}{2}$  NW  $\frac{1}{4}$  - 80 Acres Unimproved; Tr. #3 – N $\frac{1}{2}$  SW $\frac{1}{4}$  - 80 Acres Unimproved with an Existing Wind Tower; Tr. #4 – N $\frac{1}{2}$  NE $\frac{1}{4}$  - 80 Acres Unimproved or as Tracts #1 & #2 Combined – 160 Acres Improved; Tracts 2 & 3 Combined – 160 Acres Unimproved w/Wind Tower; Tracts 1 & 4 Combined – 160 Acres w/Farmstead; Tracts #1, #2 & #3 Combined – 240 Acres w/Farmstead & Wind Tower or Tracts #1, #2, #3 & #4 Combined the 320 Acre Unit.**

**The improvements on FARM #1 which are Located within Tract #1A include** - a 1 $\frac{1}{2}$  story 3 bedroom home with the main level comprised of a south entry to a kitchen-dining area, a living room w/west entryway, a bedroom w/closet and a full bath; the 2<sup>nd</sup> story has 2 bedrooms with a common closet and has some built-in storage and dormer storage area; the home has a basement with a poured concrete foundation and includes a laundry area, Lennox LP gas furnace, 100 amp breaker electrical service and storage area. Other improvements include a 2 stall unattached garage, a wooden hog house/stg. bldg., a wooden granary utilized for equipment storage and a +/-10,000 bu. steel grain bin. The property is serviced by a private well and by a septic system which is assumed to be non-compliant to Pipestone County, MN standards. This +/- 320 acre parcel of land will be offered as 4 individual tracts, combinations of tracts or as a 320 acre unit. This farm has very good eye appeal and has a level to gently rolling topography with high quality productive soils. According to FSA information this +/-320 acre farm has approx. 297.52 total acres of cropland, with the non-tillable acres comprised of the building site, wind tower site, small waterway and roads that are adjacent to 3 sides of the property; the FSA cropland, bases and yields are broken out as follows – FSA Tr. 5192 - the N $\frac{1}{2}$  NW $\frac{1}{4}$  has approx. 72.75 acres of Cropland (excluding the non-tillable acres comprised of 4.35 acres in the acreage site, a waterway & roads) with an FSA 36.1 acre corn base with a 138 bu. PLC yield and a 36.3 acre soybean base with a 36 bu. PLC yield; FSA Tr. 13938 – the S $\frac{1}{2}$  NW $\frac{1}{4}$  and the N $\frac{1}{2}$  SW $\frac{1}{4}$  has approx. 156.48 acres of cropland (excluding the non-tillable acres comprised of 1.20 acres in the wind tower site and road) with an FSA 74.05 acre corn base with a 157 bu. PLC yield and a 73.13 acre soybean base with a 42 bu. PLC yield; and FSA Tr. 240 – the N $\frac{1}{2}$  NE $\frac{1}{4}$  has approx. 76.01 acres (excluding the non-tillable acres comprised of a .64 acre waterway and roads) with an FSA 37.8 acre corn base with a 138 bu. PLC yield and a 38.2 acre soybean base with a 36 bu. PLC yield; with all of property currently enrolled under the ARC County election of the USDA farm program for both corn and soybeans. This land has some excellent soils as according to the Pipestone County Assessor the NE $\frac{1}{4}$  has a CER of 67.84, the N $\frac{1}{2}$  SE $\frac{1}{4}$  has a CER of 65.8 and the N $\frac{1}{2}$  NE $\frac{1}{4}$  has a CER of 66.8, furthermore information obtained from Surety Agri-Data indicates this land as a 320 acre unit has an extremely high weighted soil rating of 86.9, with the predominate soils comprised of primarily Class I & II soils. There is an existing wind turbine and wind easement in place on this property with EDF Renewable Energy as part of the Stoneray Wind Project, which has wind rights and 1 wind turbine in place on Tract #3 of Farm #1 – which will be assigned to the buyer(s) of these parcels, the payment on the property in its entirety including the combination of the wind turbine payment and wind rights payment a 2021 generated a total annual payment of approx. \$12,725.00, with quarterly operating payments that have been scheduled to be paid, in arrears, 60 days after the end of each Calendar Quarter, unless such date falls on a weekend or holiday, in which case it shall be due the next business day. A portion of the payment is subject to a small escalation amount – the manner in which this contract is drafted prorates the payment equally between the 320 acres included in this agreement and currently the payments are directed to be paid quarterly. Subsequent to closing the new purchaser will be obligated to execute necessary transfer documents for assignment of the seller's rights to the respective purchasers in order to receive subsequent payments in 2022 and thereafter for the remaining term of the contract which appears to be scheduled to run to 2050. The RE taxes payable in 2021 on this land were – NW $\frac{1}{4}$  - \$5,154.00; N $\frac{1}{2}$  SW $\frac{1}{4}$  - \$2,594.00; & N $\frac{1}{2}$  NE $\frac{1}{4}$  - \$1,888.00.

**FARM #2 - +/-80 Acres** – Located from the NW Corner of Farm #1 – 1 mile west on 111<sup>th</sup> St. and 1 mile north on 150<sup>th</sup> Ave. to the SE Corner of the Land at the Jct. of 121<sup>st</sup> St. and 150<sup>th</sup> Ave.; from Woodstock, MN – 3 miles west on 111<sup>th</sup> St. and 1 mile north on 150<sup>th</sup> Ave.; from Pipestone, MN – (McDonald's Corner) – 7 miles east on Hwy. #30 and 2 miles north on 150<sup>th</sup> Ave.; or from Holland , MN (Hwy. #30 & 140<sup>th</sup> Ave.) 3 ½ miles south on 140<sup>th</sup> Ave. (Co. Hwy #16), 1 mile east on 131<sup>st</sup> St. and ½ mile south on 150<sup>th</sup> Ave.

**ABBREVIATED LEGAL DESC.:** E½ SE¼, less exceptions, Sec. 31, T. 107N., R. 44W., (Rock Twp.), Pipestone Co., MN.

Farm #2 is a multifaceted parcel of land which may have potential for excavation of gravel and other aggregates, while also presenting some crop production acres and some hunting and recreational habitat that is accentuated by the location of this property lying adjacent to the Pheasant Terrace State Wildlife Management Area land owned by the State of Minnesota. According to FSA this land has been broken into two Farms/Tracts which combined has a total of 55.82 acres classified as cropland – which recently has been certified by FSA to only have approx. 28.64 total acres under cultivation; with the southern portion is Tract 5806 of Farm 6701 which is indicated to have 48.58 acres of Farmland with 27.18 acres of cropland with an FSA 12.77 acre corn base with a 134 bu. PLC yield and a 12.61 acre soybean base with a 35 bu. PLC yield; the northern portion is Tract 5807 of Farm 6702 and has approx. 28.64 acres of cropland with a 13.45 acre corn base with a 134 bu. PLC yield and a 13.29 acre soybean base with a 35 bu. PLC yield. The nontillable portion of this property consists of acres previously excavated for gravel and other materials and some acres that provide some hunting and recreational opportunities. The RE taxes payable in 2021 on this land were – \$1,176.00.

**TERMS: Cash** - A 10% nonrefundable earnest money payment sale day & balance on or before Oct. 30, 2021, with landlord's possession, with full possession and Fall tillage privileges subsequent to the harvest of the 2021 standing crops and the rights of the existing tenants subject to the terms of their existing farm lease. Marketable Title will be conveyed and abstracts of title continued to date will be provided to the buyer for examination prior to closing. Tract #3 of Farm #1 has a previously executed wind turbine & wind rights agreement/easement, to which the buyer will be obligated to assume and comply with all remaining terms and provisions, the sellers retaining the payment made in 2021 along with any previous payments and the buyer(s) to receive the payments in 2022 and in the future in accordance with the term of the agreement. All of the RE taxes payable in 2021 will be paid by the sellers with the buyer(s) to be responsible for payment of all of the RE taxes due & payable in 2022. The sellers do not warranty or guarantee that existing fences lie on the true boundary and any new fencing, if any, will be the responsibility of the purchaser pursuant to MN statutes. FSA cropland acres, yields, bases & other information is estimated and subject to FSA County Committee approval. IF FARM #1 is sold as a 320 Acre Unit and for FARM #2 - the acres sold will be based on the acres as stated on the County Tax Records; although if FARM #1 is sold in multiple parcels a survey will be completed and the acres will be adjusted in accordance with the surveyed acres; which in either case the acres are understood to be "more or less". All of the properties sold on this auction are sold subject to existing easements, restrictions, reservations or highways of record, if any, as well as any or all applicable county zoning ordinances. The improvements on this property are in "fair condition" and are sold in "AS IS" Condition, with any future upgrades of the septic system or any other upgrades to be the responsibility of the buyer of the farmstead. Information contained herein is deemed to be correct, but is not guaranteed. The RE licensees/auctioneers in this transaction stipulate that they are acting as agents for the sellers. Sold subject to confirmation of the heirs/owners.

**Each of these farms have potential to provide exceptional cash flows and would make excellent additions to area row crop or crop/livestock operations and/or as investment properties, as the parcels in Farm #1 have high percentages tillable and furthermore portions have some added income potential generated from the wind turbine and wind energy easement; while Farm #2 has a mixture of crop production, excavation of gravel and aggregates and some hunting and recreational opportunities. For addt'l information see Sutton Auction Website at [www.suttonauction.com](http://www.suttonauction.com) or contact the auctioneers.**

**To inspect the residence, contact Jim Feyerheisen – 507-227-2468 or the Auctioneers.**

**HEIRS OF DELBERT & DELORES FEYEREISEN**

**Scott Barduson – O'Neill & Barduson Law Firm**

**- Attorney & Closing Agent for the Sellers – Pipestone, MN**

**CHUCK SUTTON - Auctioneer & Land Broker – Pipestone Realty LLC- MN Auct. Lic. #59-26 -**

**Sioux Falls, SD - ph. 605-336-6315 & Pipestone, MN – ph. 507-825-3389**

**DEAN STOLTENBERG – RE Salesperson & Auctioneer – Auct. Lic. #59-38**

**- Jasper, MN - ph. 507-348-7352**

**JARED SUTTON – RE Salesperson & Auctioneer – Auct. Lic. #59-72**

**– Flandreau, SD – ph. 605-864-8527**

Minnesota  
Pipestone

U.S. Department of Agriculture  
Farm Service Agency  
**Abbreviated 156 Farm Record**

**FARM: 5946**  
Prepared: 7/15/21 3:29 PM  
Crop Year: 2021  
Page: 2 of 2

Report ID: FSA-156EZ

DISCLAIMER: This is data extracted from the web farm database. Because of potential messaging failures in MIDAS, this data is not guaranteed to be an accurate and complete representation of data contained in the MIDAS system, which is the system of record for Farm Records.

FEYEREISEN, DEBRA J

Other Producers: None

Tract Number: 5192 Description T5192 N2NW4 9 Burke

FSA Physical Location: Pipestone, MN ANSI Physical Location: Pipestone, MN

BIA Range Unit Number:

HEL Status: NHEL: no agricultural commodity planted on undetermined fields

Wetland Status: Tract does not contain a wetland

WL Violations: None

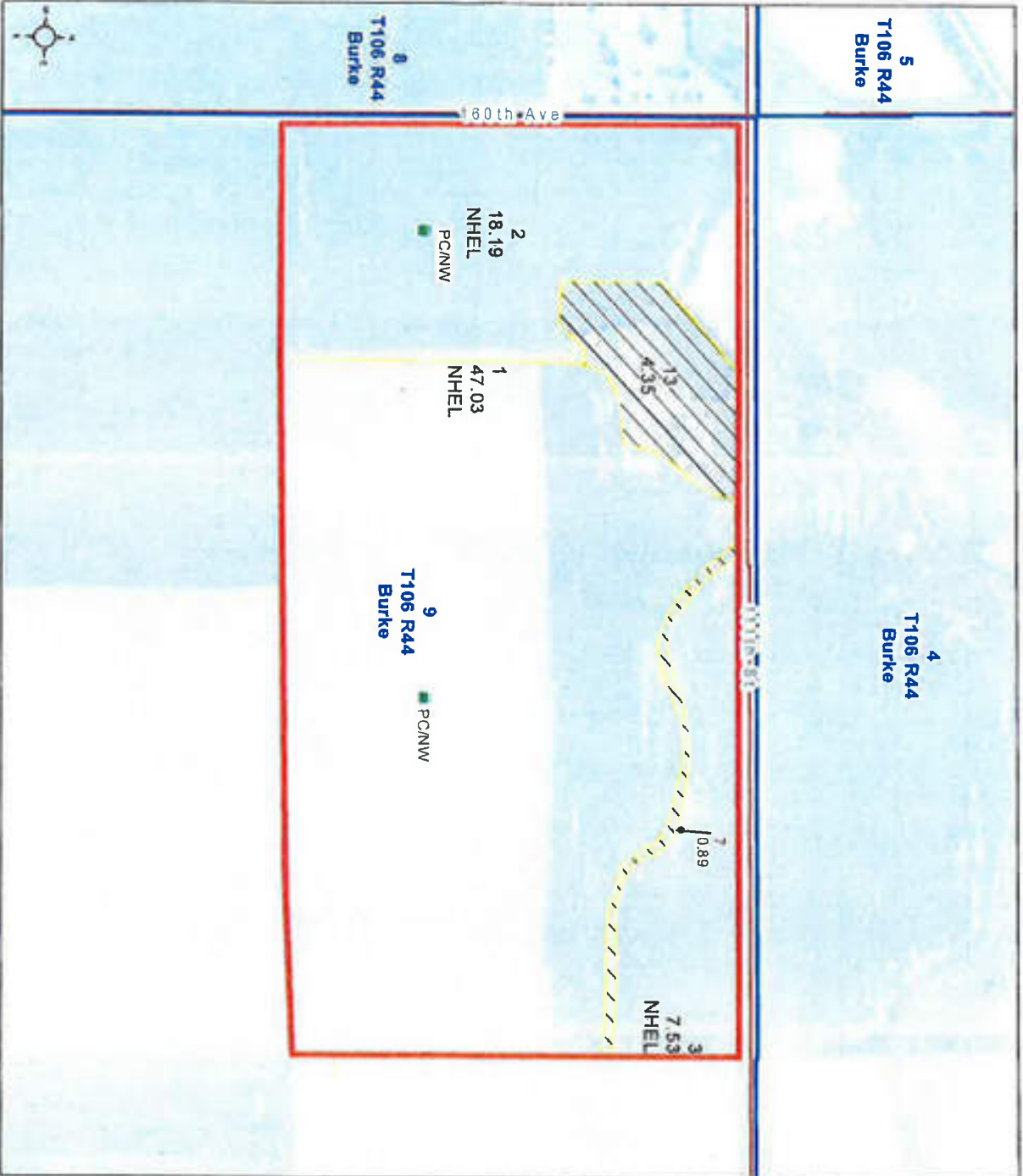
Farmland	Cropland	DCP Cropland	WBP	WRP	EWP	CRP Cropland	GRP
77.99	72.75	72.75	0.0	0.0	0.0	0.0	0.0
State Conservation	Other Conservation	Effective DCP Cropland	Double Cropped	MPL/FWP	Native Sod		
0.0	0.0	72.75	0.0	0.0	0.0		

Crop	Base Acreage	PLC Yield	CCC-505 CRP Reduction
CORN	36.1	138	0.00
SOYBEANS	36.3	36	0.00
<b>Total Base Acres:</b>	<b>72.4</b>		

Owners: FEYEREISEN, JIM  
QUIRAM, JUDITH MARIE  
FEYEREISEN, DEBRA J

HAUGEN, CONNIE JO  
FORD, CYNTHIA KAY

Other Producers: None



**Farm 5946**  
**Tract 5192**

2021 Program Year  
Map Created March 29, 2021



- Unless otherwise noted:  
Shares are 100% operator  
Crops are non-irrigated  
Corn = yellow for grain  
Soybeans = common soybeans for grain  
Wheat = HRS, HRW = Grain  
Sunflower = Oil, Non-Oil = Grain  
Oats and Barley = Spring for grain  
Rye = for grain  
Peas = process  
Alfalfa, Mixed Forage AGM, GMA, ISS = for forage  
Beans = Dry Edible  
MAG = for GZ  
Canola = Spring for seed

- Common Land Unit**  
/ / Non-Cropland  
Crop Land  
Tract Boundary  
Minnesota\_Transparency\_Polygon\_02142019

- Wetland Determination Identifiers**  
● Restricted Use  
● Limited Restrictions  
● Exempt from Conservation Compliance Provisions

Tract Cropland Total: 72.75 acres

United States Department of Agriculture (USDA) Farm Service Agency (FSA) maps are for FSA Program administration only. This map does not represent a legal survey or reflect actual ownership, rather it depicts the information provided directly from the producer and/or National Agricultural Imagery Program (NAIP) imagery. The producer accepts the data as is and assumes all risks associated with its use. USDA-FSA assumes no responsibility for actual or consequential damage incurred as a result of any user's reliance on this data outside FSA Programs. Wetland identifiers do not represent the size, shape, or specific determination of the area. Refer to your original determination (CPA-026 and attached maps) for exact boundaries and determinations or contact USDA Natural Resources Conservation Service (NRCS). This map displays the 2019 NAIP imagery.

FARM: 8556

Minnesota

U.S. Department of Agriculture

Prepared: 7/15/21 3:31 PM

Murray

Farm Service Agency

Crop Year: 2021

Report ID: FSA-156EZ

Abbreviated 156 Farm Record

Page: 1 of 2

DISCLAIMER: This is data extracted from the web farm database. Because of potential messaging failures in MIDAS, this data is not guaranteed to be an accurate and complete representation of data contained in the MIDAS system, which is the system of record for Farm Records.

Operator Name: HEARD, PATRICK; Farm Identifier: BURKE 9

Farms Associated with Operator: 3164, 3767, 7924, 7965

ARC/PLC G/IF Eligibility: Eligible

Transferred From: 27117 - 0006027

CRP Contract Number(s): None

Table with 10 columns: Farmland, Cropland, DCP Cropland, WBP, WRP, EWP, CRP Cropland, GRP, Farm Status, Number of Tracts. Values include 157.68, 156.48, 156.48, 0.0, 0.0, 0.0, 0.0, 0.0, Active, 1.

Table with 7 columns: PLC NONE, ARC-CO CORN, SOYBN, ARC-IC NONE, PLC-Default NONE, ARC-CO-Default NONE, ARC-IC-Default NONE.

Table with 5 columns: Crop, Base Acreage, PLC Yield, CCC-505 CRP Reduction, HIP. Rows for CORN, SOYBEANS, and Total Base Acres.

Tract Number: 13938; Description: T5193 S2NW4 & N2SW4 9 BURKE; FSA Physical Location: Pipestone, MN; ANSI Physical Location: Pipestone, MN; BIA Range Unit Number; HEL Status: NHEL: no agricultural commodity planted on undetermined fields; Wetland Status: Tract does not contain a wetland; WL Violations: None

Table with 8 columns: Farmland, Cropland, DCP Cropland, WBP, WRP, EWP, CRP Cropland, GRP. Values include 157.68, 156.48, 156.48, 0.0, 0.0, 0.0, 0.0, 0.0.

Table with 5 columns: Crop, Base Acreage, PLC Yield, CCC-505 CRP Reduction. Rows for CORN, SOYBEANS, and Total Base Acres.

Owners: FEYEREISEN, JIM; QUIRAM, JUDITH MARIE; HAUGEN, CONNIE JO; FORD, CYNTHIA KAY

**Farm 8556**  
**Tract 13938**

2021 Program Year

Map Created March 29, 2021

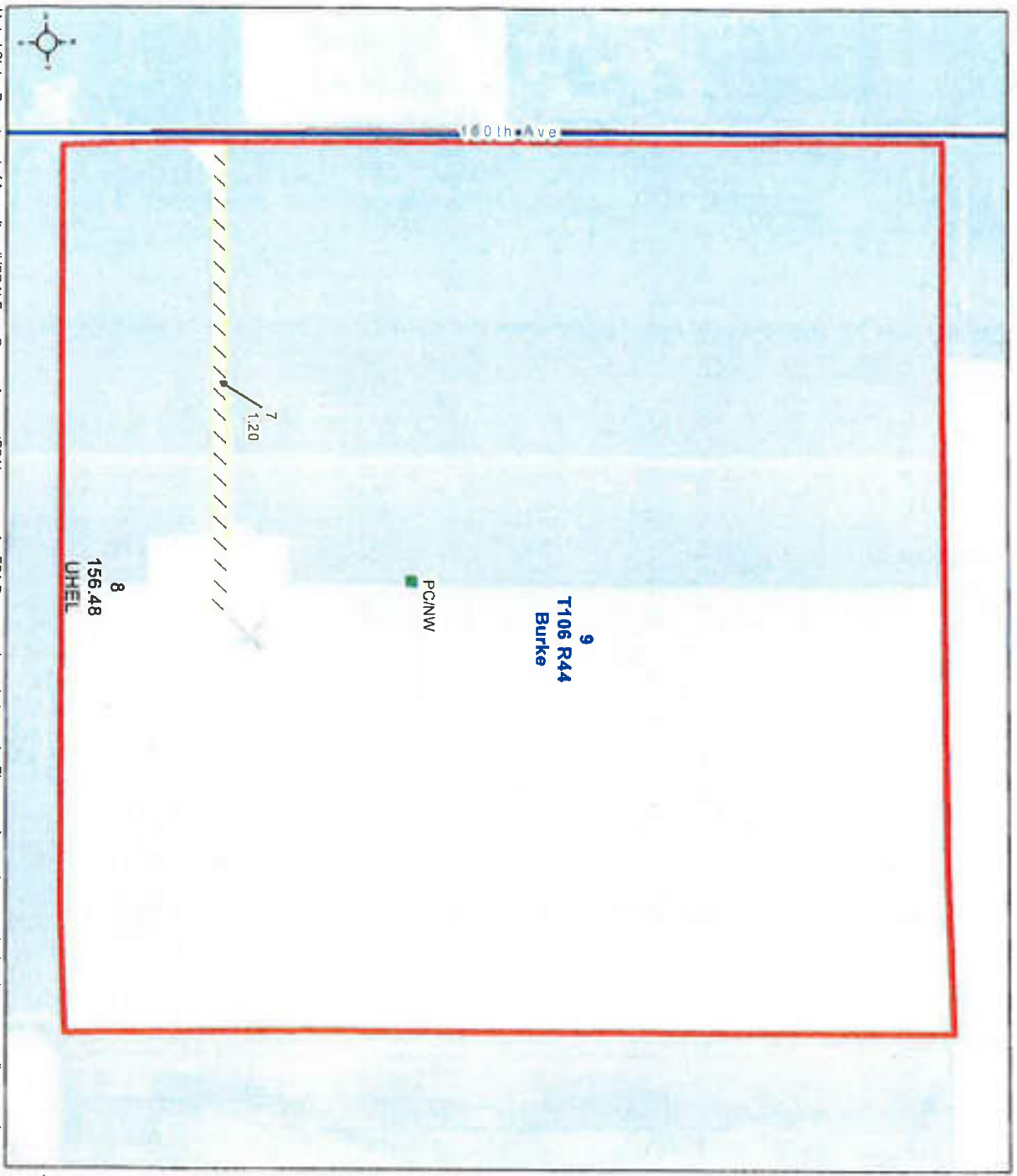


- Unless otherwise noted:  
 Shares are 100%, operator  
 Crops are non-irrigated  
 Corn = yellow for grain  
 Soybeans = common soybeans for grain  
 Wheat = HRS, HRW = Grain  
 Sunflower = Oil, Non-Oil = Grain  
 Oats and Barley = Spring for grain  
 Rye = for grain  
 Peas = process  
 Alfalfa, Mixed Forage AGM, GMA, GSS = for forage  
 Beans = Dry Edible  
 NAG = for GZ  
 Canola = Spring for seed

- Common Land Unit**  
 / Non-Cropland  
 Cropland  
 Tract Boundary  
 Minnesota\_Transparency\_Polygon\_02142019

- Wetland Determination Identifiers**  
 ● Restricted Use  
 ● Limited Restrictions  
 ● Exempt from Conservation  
 ● Compliance Provisions

Tract Cropland Total: 156.48 acres



United States Department of Agriculture (USDA) Farm Service Agency (FSA) maps are for FSA Program administration only. This map does not represent a legal survey or reflect actual ownership, rather it depicts the information provided directly from the producer and/or National Aerial Imagery Program (NAIP) imagery. The producer accepts the data as is and assumes all risks associated with its use. USDA-FSA assumes no responsibility for actual or consequential damage incurred as a result of any user's reliance on this data outside FSA Programs. Wetland identifiers do not represent the size, shape, or specific determination of the area. Refer to your original determination (CPA-026 and attached maps) for exact boundaries and determinations or contact USDA Natural Resources Conservation Service (NRCS). This map displays the 2019 NAIP imagery.

Minnesota  
 Pipestone  
 Report ID: FSA-156EZ

U.S. Department of Agriculture  
 Farm Service Agency  
 Abbreviated 156 Farm Record

FARM: 5946  
 Prepared: 7/15/21 3:29 PM  
 Crop Year: 2021  
 Page: 1 of 2

DISCLAIMER: This is data extracted from the web farm database. Because of potential messaging failures in MIDAS, this data is not guaranteed to be an accurate and complete representation of data contained in the MIDAS system, which is the system of record for Farm Records.

Operator Name: HEARD, PATRICK  
 Farm Identifier: 5486+5944=5946  
 Recon Number: 2014 - 100

Farms Associated with Operator:  
 6702

ARC/PLC G//F Eligibility: Eligible

CRP Contract Number(s): None

Farmland	Cropland	DCP Cropland	WBP	WRP	EWP	CRP Cropland	GRP	Farm Status	Number of Tracts
154.64	148.76	148.76	0.0	0.0	0.0	0.0	0.0	Active	2
State Conservation	Other Conservation	Effective DCP Cropland	Double Cropped	MPL/FWP	Native Sod				
0.0	0.0	148.76	0.0	0.0	0.0				

ARC/PLC						
PLC	ARC-CO	ARC-IC	PLC-Default	ARC-CO-Default	ARC-IC-Default	
NONE	CORN, SOYBN	NONE	NONE	NONE	NONE	NONE

Crop	Base Acreage	PLC Yield	CCC-505 CRP Reduction	HIP
CORN	73.9	138	0.00	0
SOYBEANS	74.5	36	0.00	
<b>Total Base Acres:</b>	<b>148.4</b>			

Tract Number: 240 Description: 18 1A T240 N2NE4 9 BUR  
 FSA Physical Location: Pipestone, MN ANSI Physical Location: Pipestone, MN  
 BIA Range Unit Number:  
 HEL Status: NHEL: no agricultural commodity planted on undetermined fields  
 Wetland Status: Tract does not contain a wetland  
 WL Violations: None

Farmland	Cropland	DCP Cropland	WBP	WRP	EWP	CRP Cropland	GRP
76.65	76.01	76.01	0.0	0.0	0.0	0.0	0.0
State Conservation	Other Conservation	Effective DCP Cropland	Double Cropped	MPL/FWP	Native Sod		
0.0	0.0	76.01	0.0	0.0	0.0		

Crop	Base Acreage	PLC Yield	CCC-505 CRP Reduction
CORN	37.8	138	0.00
SOYBEANS	38.2	36	0.00
<b>Total Base Acres:</b>	<b>76.0</b>		

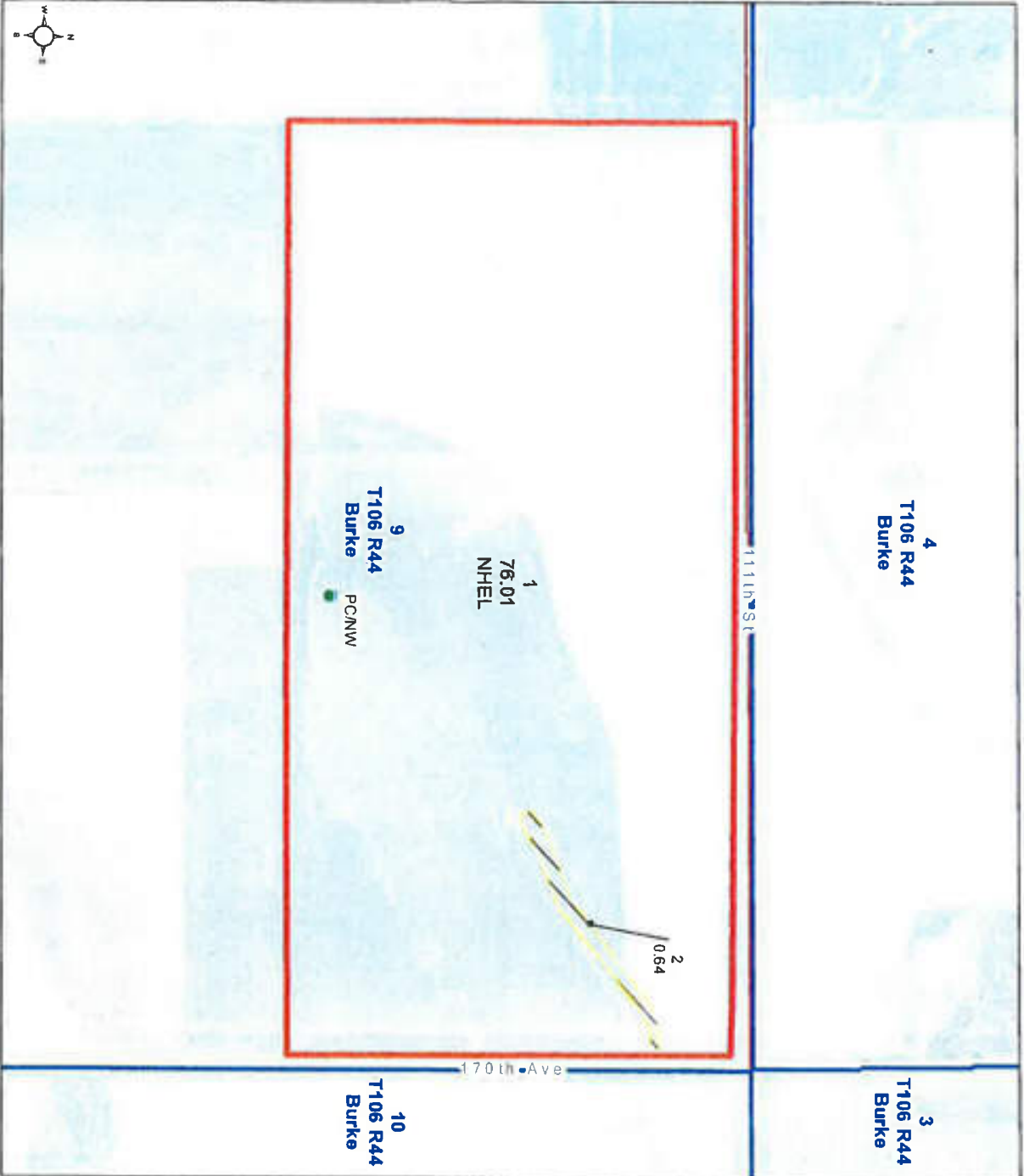
Owners: FEYEREISEN, JIM QUIRAM, JUDITH MARIE  
 HAUGEN, CONNIE JO FORD, CYNTHIA KAY




**Pipestone County, Minnesota**

**Farm 5946**  
**Tract 240**

2021 Program Year  
 Map Created March 29, 2021



Unless otherwise noted:  
 Shares are 100% operator  
 Crops are non-irrigated  
 Corn = yellow for grain  
 Soybeans = common soybeans for grain  
 Wheat = HRS, HRW = Grain  
 Sunflower = Oil, Non-Oil = Grain  
 Oats and Barley = Spring for grain  
 Rye = for grain  
 Peas = process  
 Alfalfa, Mixed Forage AGM, GMA, KSS = for forage  
 Beans = Dry Edible  
 MAG = for GZ  
 Canola = Spring for seed

**Common Land Unit**  
 / Non-Cropland  
 Tract Boundary  
 Minnesota\_Transparency\_Polygon\_02142019

**Wetland Determination Identifiers**  
 Restricted Use  
 Limited Restrictions  
 Exempt from Conservation Compliance Provisions

Tract Cropland Total: 76.01 acres

United States Department of Agriculture (USDA) Farm Service Agency (FSA) maps are for FSA Program administration only. This map does not represent a legal survey or reflect actual ownership, rather it depicts the information provided directly from the producer and/or National Agricultural Imagery Program (NAIP) imagery. The producer accepts the data as is and assumes all risks associated with its use. USDA-FSA assumes no responsibility for actual or consequential damage incurred as a result of any user's reliance on this data outside FSA Programs. Wetland identifiers do not represent the size, shape, or specific determination of the area. Refer to your original determination (CPA-026 and attached maps) for exact boundaries and determinations or contact USDA Natural Resources Conservation Service (NRCS). This map displays the 2019 NAIP imagery.

Minnesota

Murray

Report ID: FSA-156EZ

U.S. Department of Agriculture

Farm Service Agency

**Abbreviated 156 Farm Record**

**FARM: 8556**

Prepared: 7/15/21 3:31 PM

Crop Year: 2021

Page: 2 of 2

**DISCLAIMER:** This is data extracted from the web farm database. Because of potential messaging failures in MIDAS, this data is not guaranteed to be an accurate and complete representation of data contained in the MIDAS system, which is the system of record for Farm Records.

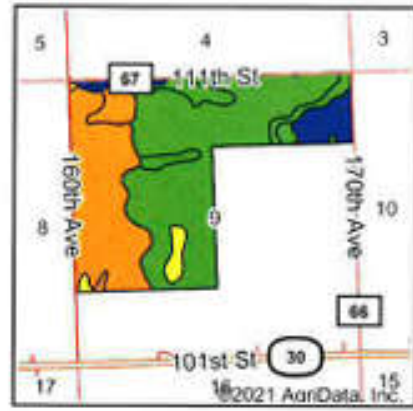
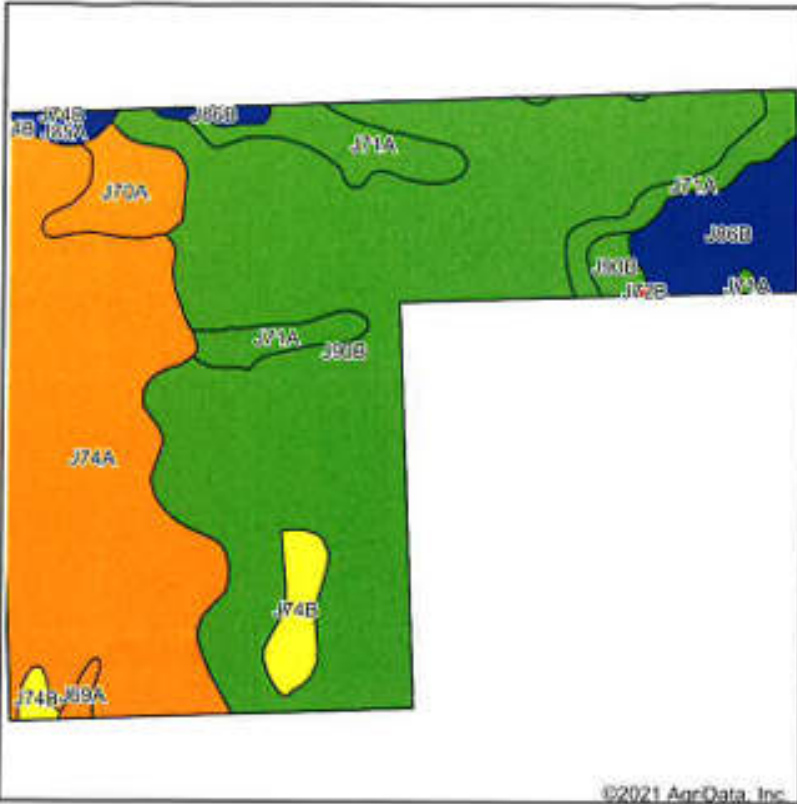
---

FEYEREISEN, DEBRA J

Other Producers: None

---

# Soils Map



State: **Minnesota**  
 County: **Pipestone**  
 Location: **9-106N-44W**  
 Township: **Burke**  
 Acres: **320.51**  
 Date: **7/15/2021**



Soils data provided by USDA and NRCS.

Area Symbol: MN117, Soil Area Version: 20

Code	Soil Description	Acres	Percent of field	PI Legend	Non-Irr Class *c	Productivity Index
J90B	Kranzburg-Brookings silty clay loams, 1 to 6 percent slopes	163.40	51.0%		Ile	93
J74A	Estelline silt loam, coteau, 0 to 2 percent slopes	91.45	28.5%		Ils	75
J71A	Brookings silty clay loam, 0 to 2 percent slopes	23.96	7.5%		Iw	98
J86B	Vienna silty clay loam, 3 to 6 percent slopes	19.03	5.9%		Ile	90
J70A	Brandt silty clay loam, 0 to 2 percent slopes	10.02	3.1%		Is	80
J74B	Estelline silt loam, coteau, 2 to 6 percent slopes	8.69	2.7%		Ile	70
J85A	Trosky silty clay loam, 0 to 2 percent slopes	2.57	0.8%		Ilw	83
J69A	Athelwold silty clay loam, 0 to 2 percent slopes	1.20	0.4%		Is	80
J72B	Renshaw-Sandberg complex, 2 to 6 percent slopes	0.19	0.1%		Ille	48
<b>Weighted Average</b>						<b>86.9</b>

\*c: Using Capabilities Class Dominant Condition Aggregation Method  
 Soils data provided by USDA and NRCS.

Minnesota  
Pipestone

U.S. Department of Agriculture  
Farm Service Agency  
**Abbreviated 156 Farm Record**

**FARM: 6701**  
Prepared: 7/15/21 3:30 PM  
Crop Year: 2021  
Page: 1 of 2

Report ID: FSA-156EZ

DISCLAIMER: This is data extracted from the web farm database. Because of potential messaging failures in MIDAS, this data is not guaranteed to be an accurate and complete representation of data contained in the MIDAS system, which is the system of record for Farm Records.

Operator Name: FEYEREISEN FAMILY FARM  
Farm Identifier: \_\_\_\_\_  
Recon Number: 2020 - 40

Farms Associated with Operator:  
None

ARC/PLC G//F Eligibility: Eligible

CRP Contract Number(s): 11210

Farmland	Cropland	DCP Cropland	WBP	WRP	EWP	CRP Cropland	GRP	Farm Status	Number of Tracts
48.58	27.18	27.18	0.0	0.0	0.0	0.0	0.0	Active	1
State Conservation	Other Conservation	Effective DCP Cropland	Double Cropped	MPL/FWP	Native Sod				
0.0	0.0	27.18	0.0	0.0	0.0				

ARC/PLC						
PLC	ARC-CO	ARC-IC	PLC-Default	ARC-CO-Default	ARC-IC-Default	
NONE	CORN, SOYBN	NONE	NONE	NONE	NONE	

Crop	Base Acreage	PLC Yield	CCC-505 CRP Reduction	HIP
CORN	12.77	134	0.00	0
SOYBEANS	12.61	35	0.00	
<b>Total Base Acres:</b>	<b>25.38</b>			

Tract Number: 5806 Description: SE4 Rock 31  
FSA Physical Location: Pipestone, MN ANSI Physical Location: Pipestone, MN

BIA Range Unit Number:

HEL Status: NHEL: no agricultural commodity planted on undetermined fields  
Wetland Status: Tract contains a wetland or farmed wetland  
Recon Number: 2020 - 39

WL Violations: None

Farmland	Cropland	DCP Cropland	WBP	WRP	EWP	CRP Cropland	GRP
48.58	27.18	27.18	0.0	0.0	0.0	0.0	0.0
State Conservation	Other Conservation	Effective DCP Cropland	Double Cropped	MPL/FWP	Native Sod		
0.0	0.0	27.18	0.0	0.0	0.0		

Crop	Base Acreage	PLC Yield	CCC-505 CRP Reduction
CORN	12.77	134	0.00
SOYBEANS	12.61	35	0.00
<b>Total Base Acres:</b>	<b>25.38</b>		

Owners: FEYEREISEN, JIM HAUGEN, CONNIE JO  
QUIRAM, JUDITH MARIE FORD, CYNTHIA KAY

Minnesota  
Pipestone

Report ID: FSA-156EZ

U.S. Department of Agriculture  
Farm Service Agency

**Abbreviated 156 Farm Record**

**FARM: 6701**

Prepared: 7/15/21 3:30 PM

Crop Year: 2021

Page: 2 of 2

DISCLAIMER: This is data extracted from the web farm database. Because of potential messaging failures in MIDAS, this data is not guaranteed to be an accurate and complete representation of data contained in the MIDAS system, which is the system of record for Farm Records.

---

FEYEREISEN, DEBRA J

Other Producers: None

---



**Farm 6701**  
**Tract 5806**




2021 Program Year

Map Created March 29, 2021

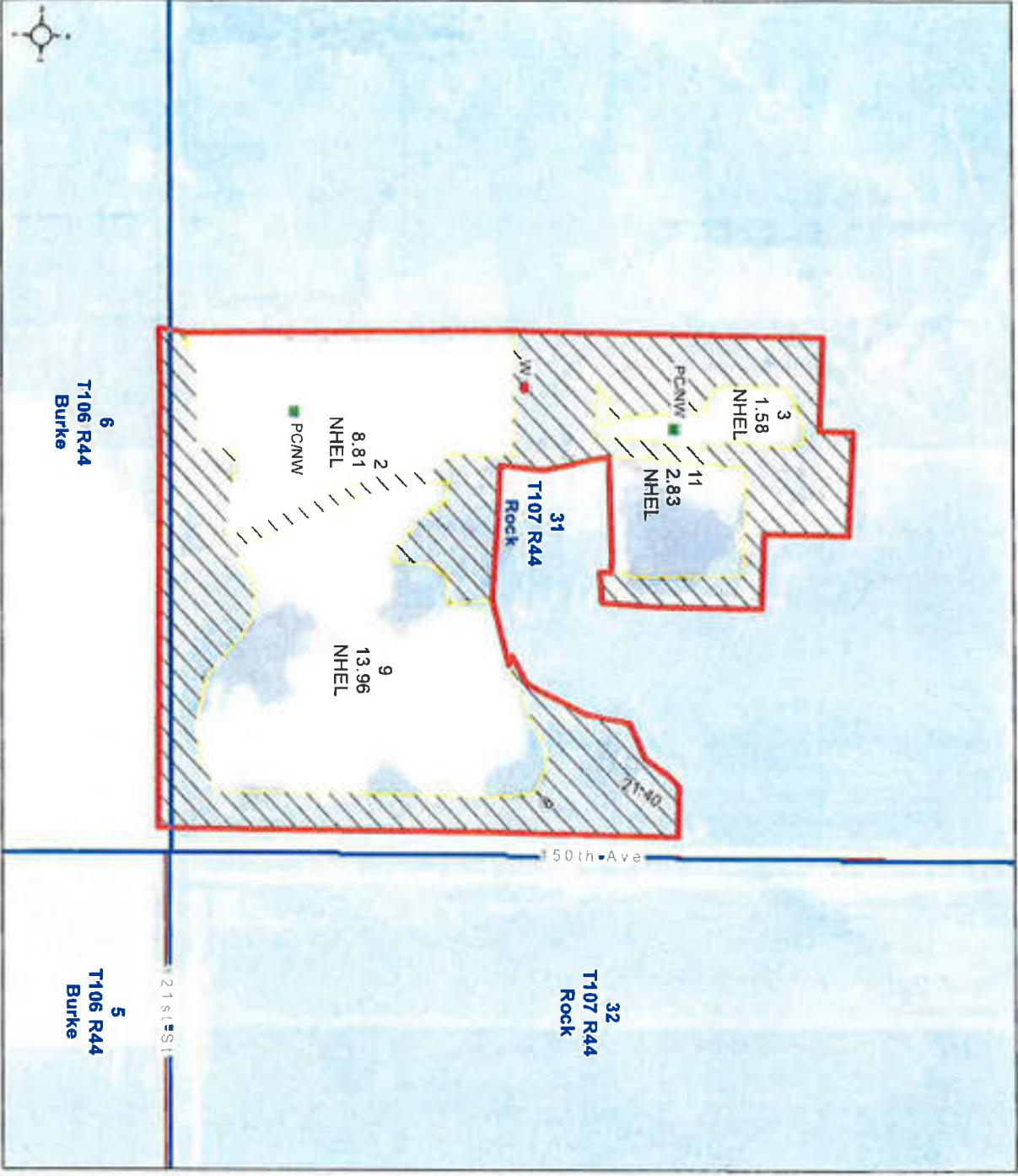


- Unless otherwise noted:  
 Shares are 100%, operator  
 Crops are non-irrigated  
 Corn = yellow for grain  
 Soybeans = common soybeans for grain  
 Wheat = HRS, HRW = Grain  
 Sunflower = Oil, Non-Oil = Grain  
 Oats and Barley = Spring for grain  
 Rye = for grain  
 Peas = process  
 Alfalfa, Mixed Forage AGM, GMA, ISS = for forage  
 Beans = Dry Edible  
 MAG = for GZ  
 Canola = Spring for seed

- Common Land Unit**  
 / / Non-Cropland  
 Cropland  
 Tract Boundary  
 Minnesota\_Transparency\_Polygon\_02142019

- Wetland Determination Identifiers**  
 Restricted Use  
 Limited Restrictions  
 Exempt from Conservation Compliance Provisions

Tract Cropland Total: 27.18 acres



United States Department of Agriculture (USDA) Farm Service Agency (FSA) maps are for FSA Program administration only. This map does not represent a legal survey or reflect actual ownership, rather it depicts the information provided directly from the producer and/or National Agricultural Imagery Program (NAIP) imagery. The producer accepts the data 'as is' and assumes all risks associated with its use. USDA-FSA assumes no responsibility for actual or consequential damage incurred as a result of any user's reliance on this data outside FSA Programs. Wetland identifiers do not represent the size, shape, or specific determination of the area. Refer to your original determination (CPA-026 and attached maps) for exact boundaries and determinations or contact USDA Natural Resources Conservation Service (NRCS). This map displays the 2019 NAIP imagery.

Minnesota  
 Pipestone  
 Report ID: FSA-156EZ

U.S. Department of Agriculture  
 Farm Service Agency  
 Abbreviated 156 Farm Record

FARM: 6702  
 Prepared: 7/15/21 3:30 PM  
 Crop Year: 2021  
 Page: 1 of 2

DISCLAIMER: This is data extracted from the web farm database. Because of potential messaging failures in MIDAS, this data is not guaranteed to be an accurate and complete representation of data contained in the MIDAS system, which is the system of record for Farm Records.

Operator Name: HEARD, PATRICK  
 Farm Identifier: [RECEIVED]  
 Recon Number: 2020 - 40

Farms Associated with Operator: 5946

ARC/PLC G//F Eligibility: Eligible

JUL 15 2021  
 Pipestone County FSA

CRP Contract Number(s): None

Farmland	Cropland	DCP Cropland	WBP	WRP	EWP	CRP Cropland	GRP	Farm Status	Number of Tracts
28.64	28.64	28.64	0.0	0.0	0.0	0.0	0.0	Active	1
State Conservation	Other Conservation	Effective DCP Cropland	Double Cropped	MPL/FWP	Native Sod				
0.0	0.0	28.64	0.0	0.0	0.0				

ARC/PLC

PLC	ARC-CO	ARC-IC	PLC-Default	ARC-CO-Default	ARC-IC-Default
NONE	CORN, SOYBN	NONE	NONE	NONE	NONE

Crop	Base Acreage	PLC Yield	CCC-505 CRP Reduction	HIP
CORN	13.45	134	0.00	0
SOYBEANS	13.29	35	0.00	
<b>Total Base Acres:</b>	<b>26.74</b>			

Tract Number: 5807 Description: SE4 Rock 31

FSA Physical Location: Pipestone, MN ANSI Physical Location: Pipestone, MN

BIA Range Unit Number:

HEL Status: NHEL: no agricultural commodity planted on undetermined fields

Recon Number

Wetland Status: Tract does not contain a wetland

2020 - 39

WL Violations: None

Farmland	Cropland	DCP Cropland	WBP	WRP	EWP	CRP Cropland	GRP
28.64	28.64	28.64	0.0	0.0	0.0	0.0	0.0
State Conservation	Other Conservation	Effective DCP Cropland	Double Cropped	MPL/FWP	Native Sod		
0.0	0.0	28.64	0.0	0.0	0.0		

Crop	Base Acreage	PLC Yield	CCC-505 CRP Reduction
CORN	13.45	134	0.00
SOYBEANS	13.29	35	0.00
<b>Total Base Acres:</b>	<b>26.74</b>		

Owners: FEYEREISEN, JIM  
 QUIRAM, JUDITH MARIE

HAUGEN, CONNIE JO  
 FORD, CYNTHIA KAY

Minnesota

Pipestone

Report ID: FSA-156EZ

U.S. Department of Agriculture

Farm Service Agency

**Abbreviated 156 Farm Record**

**FARM: 6702**

Prepared: 7/15/21 3:30 PM

Crop Year: 2021

Page: 2 of 2

**DISCLAIMER:** This is data extracted from the web farm database. Because of potential messaging failures in MIDAS, this data is not guaranteed to be an accurate and complete representation of data contained in the MIDAS system, which is the system of record for Farm Records.

---

FEYEREISEN, DEBRA J

Other Producers: None

---





United States  
Department of  
Agriculture

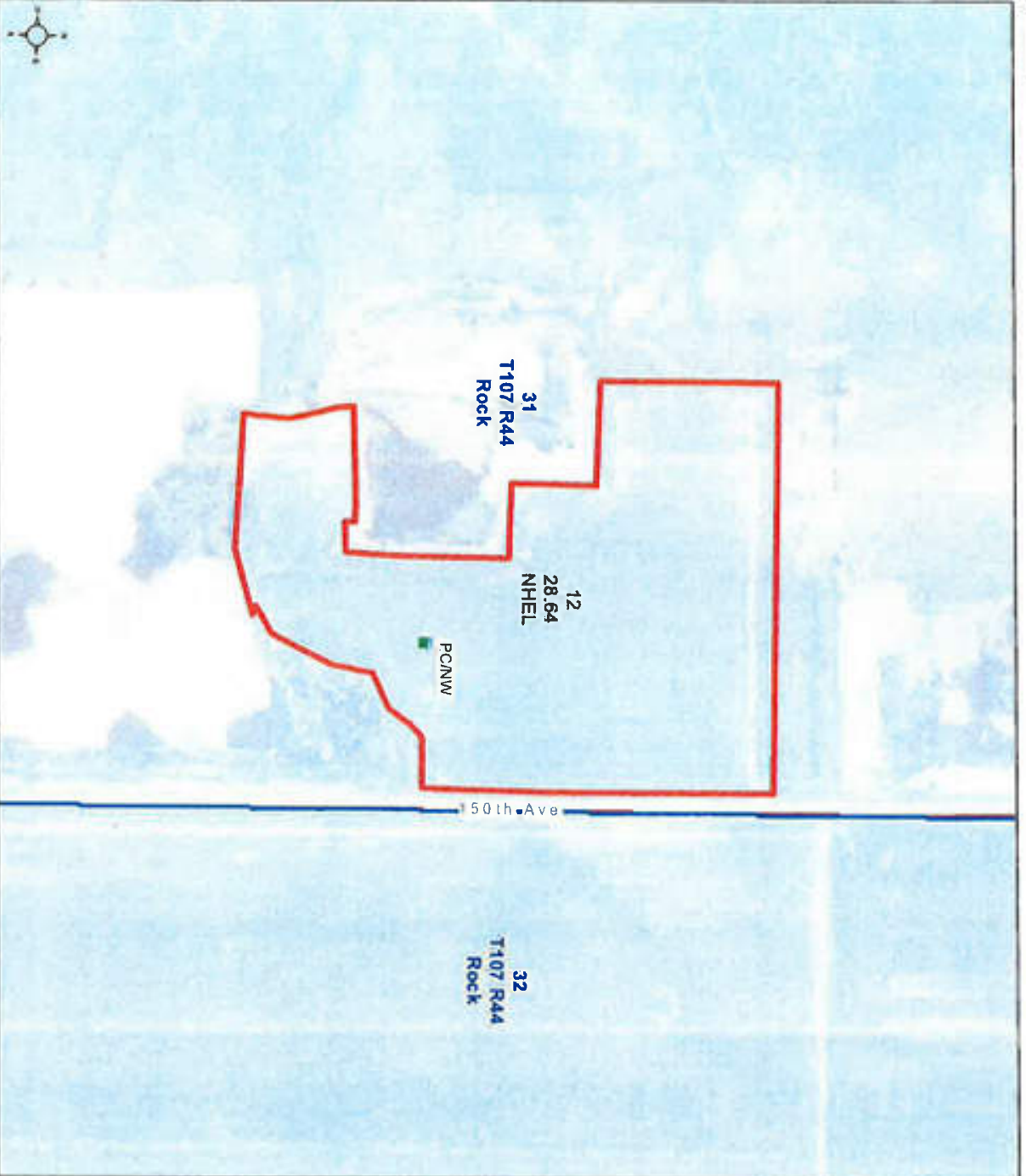
## Pipestone County, Minnesota

### Farm 6702

### Tract 5807

#### 2021 Program Year

Map Created March 29, 2021



Unless otherwise noted:  
 Shares are 100% operator  
 Crops are non-irrigated  
 Corn = yellow for grain  
 Soybeans = common soybeans for grain  
 Wheat = HRS, HRW = Grain  
 Sunflower = Oil, Non-Oil = Grain  
 Oats and Barley = Spring for grain  
 Rye = for grain  
 Peas = process  
 Beans = Dry Edible  
 MAG = for GZ  
 Canola = Spring for seed

#### Common Land Unit

Cropland  
 Tract Boundary  
 Minnesota\_Transparency\_Polygon\_02142019

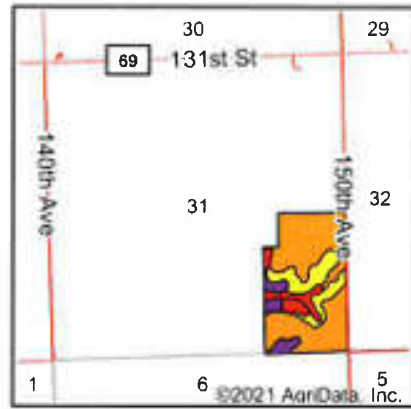
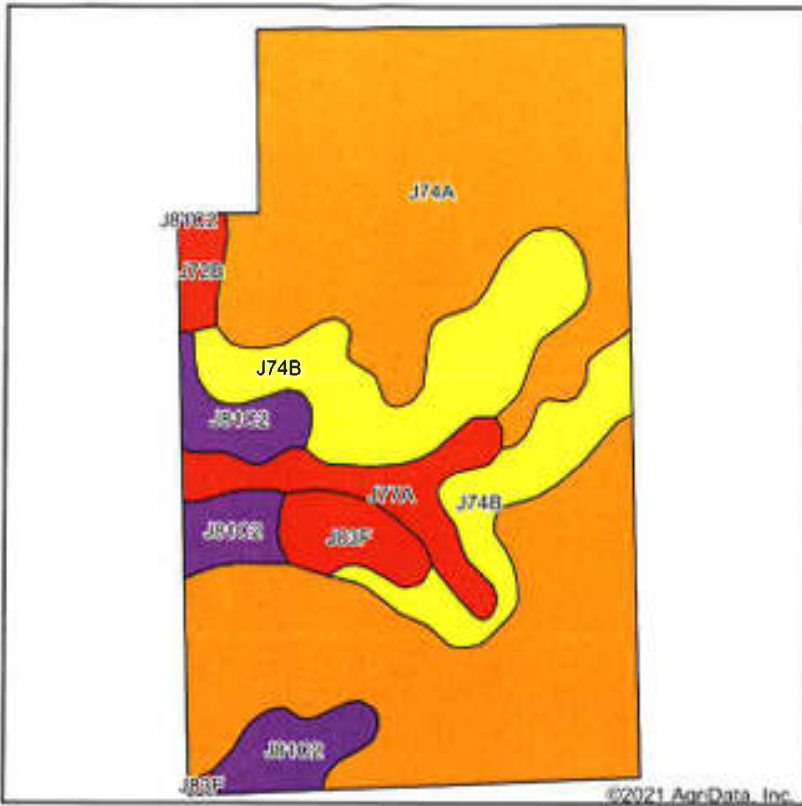
#### Wetland Determination Identifiers

- Restricted Use
- Limited Restrictions
- Exempt from Conservation Compliance Provisions

Tract Cropland Total: 28.64 acres

United States Department of Agriculture (USDA) Farm Service Agency (FSA) maps are for FSA Program administration only. This map does not represent a legal survey or reflect actual ownership, rather it depicts the information provided directly from the producer and/or National Agricultural Imagery Program (NAIP) imagery. The producer accepts the data use is and assumes all risks associated with its use. USDA-FSA assumes no responsibility for actual or consequential damage incurred as a result of any user's reliance on this data outside FSA Programs. Wetland identifiers do not represent the size, shape, or specific determination of the area. Refer to your original determination (CPA-026 and attached maps) for exact boundaries and determinations or contact USDA Natural Resources Conservation Service (NRCS). This map displays the 2019 NAIP imagery.

# Soils Map



State: **Minnesota**  
 County: **Pipestone**  
 Location: **31-107N-44W**  
 Township: **Rock**  
 Acres: **79.79**  
 Date: **7/15/2021**

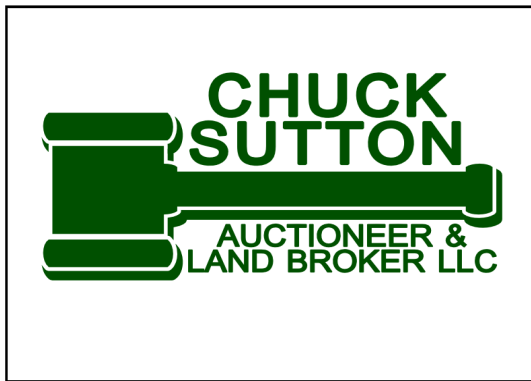


Soils data provided by USDA and NRCS.

Area Symbol: MN117, Soil Area Version: 20

Code	Soil Description	Acres	Percent of field	PI Legend	Non-Irr Class *c	Productivity Index
J74A	Estelline silt loam, coteau, 0 to 2 percent slopes	51.42	64.4%		Ils	75
J74B	Estelline silt loam, coteau, 2 to 6 percent slopes	14.22	17.8%		Ile	70
J81C2	Renshaw-Barnes complex, 6 to 12 percent slopes, moderately eroded	6.27	7.9%		IVe	54
J77A	Lamoure silty clay loam, 0 to 2 percent slopes, frequently flooded	4.18	5.2%		Vw	20
J83F	Sandberg-Buse-Everts complex, 12 to 40 percent slopes	2.54	3.2%		VIIe	23
J72B	Renshaw-Sandberg complex, 2 to 6 percent slopes	1.16	1.5%		IIe	48
<b>Weighted Average</b>						<b>67.5</b>

\*c: Using Capabilities Class Dominant Condition Aggregation Method  
 Soils data provided by USDA and NRCS.



[www.suttonauction.com](http://www.suttonauction.com)

The Sale of your property may be a once in a lifetime event...

Our company has been serving the auction needs of clients since 1932 & presently we are licensed real estate brokers in SD, MN, IA, & NEB. Our firm has grown to be recognized as industry leaders in the Auction Industry.

In the last 10 years our firm has sold over 115,000 acres of Property including Ag Land, Acreages & Development Property. We have also sold numerous Farm Equipment, Construction Equipment & other Personal Property Auctions.

**"Successful Auctions Don't Just Happen They're Planned"** - The Sale of your property may be a once in a lifetime event, so it is important that you rely on an auctioneer with experience, knowledge, education, marketing & promotional skills, established contacts with numerous qualified prospective buyers and last but not least - a track record of success! Our auction company has been serving the auction needs of clients since 1932 and currently we are licensed RE Brokers in South Dakota, Minnesota, Iowa and Nebraska. Our firm has grown to be recognized as a leader in the auction industry. Furthermore, auctions have become ***the marketing method of choice for farmland***, being the most tried and true method of marketing with a proven record of results surpassing such methods as sealed bids and negotiated sales, ***with auctions providing the "Ultimate Marketplace" - by maximizing the number of prospective buyers and also allows the seller to set the terms of sale and puts all buyers on an equal playing field, where all parties have a fair and equal opportunity to bid and buy.***

If you are considering the sale of your land, contact, Chuck Sutton and his staff at Chuck Sutton Auctioneer & Land Broker, LLC or any of our other affiliated offices, and let him and his professional associates put their years of experience to work for You!!

**"Remember, Successful Auctions Don't Just Happen, They're Planned!!"**  
[www.suttonauction.com](http://www.suttonauction.com)

<p><b>Chuck Sutton Auctioneer &amp; Land Broker, LLC</b>          1116 N. West Ave          Sioux Falls, SD          ph. 605-336-6315</p>	<p><b>Kuhle-Sutton Agency, LLC</b>          127 2nd Ave. W          Flandreau, SD          ph. 605-997-3777  <a href="http://www.kuhlesutton.com">www.kuhlesutton.com</a></p>	<p><b>Pipestone Realty, LLC</b>          120 N. Hiawatha Ave.          Pipestone, MN          ph. 507-825-3389  <a href="http://www.pipestonerealty.com">www.pipestonerealty.com</a></p>
---	---	--

# NOTES